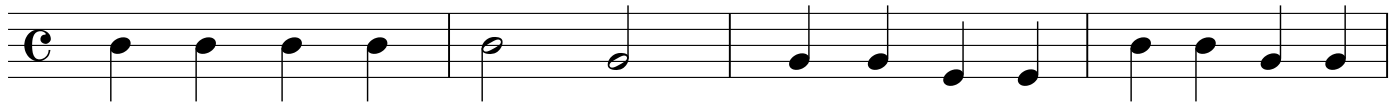
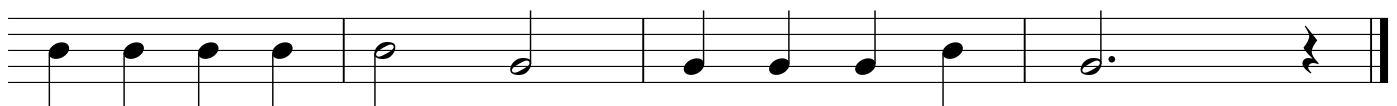


Hans, was tuast denn du da?

Volkswaise



B b A b B b A b
 Hans, was tuast denn du da? **A b B b** Nimm dei Pfei - fal **B b A b** blas a bis - sal,



B b A b B b A b steh nit all - weil **B b A b** so da, **A b B b** wia da Hahn vorm **b b b** Strohh!
B B B ζ

Wo is denn der Måhder

Volkswaise



ζ **B b A b** Wo is— denn der **A b B b** Mah - der, der **A b B b** mei— Wie-serl **B b A b** ma - ht, er maht



B b A b hin— er maht **A b B b** her— und schen **A b B b** la - ng - sam schen **b b b** stad.
B B B